



ACF BULLETIN

Since 1952, the official publication of the American Checker Federation
Currently published at P.O. Box 1, Belpre, OH 45714-0001



News: Renew!, President’s message, WCDF events	ii
2010 National Tournament News and Rule Changes	1
Tournament Results	2
Tournament Calendar	3
Club Calendar	4
Obituary – Tony Kozenski	5
2009 BC, part 25 (still more corrections to Fortman’s <i>Basic Checkers</i>)	5
Games from the 45th and 46th Three-Move National Tournaments	nat. ty.–101
Numbered Board (how to read checker moves)	iii
Computer Checkers – Ryan’s <i>Modern Encyclopedia of Checkers</i> , 2nd ed.	iv
Beginners’ Page	iv

© Copyright 2010, American Checker Federation

F. Alan Millhone
President
P.O. Box 1
Belpre, OH 45714-0001
alan.millhone@gmail.com

Kim Willis
Secretary/Treasurer and
Youth Director
31 Sandstone Rd.
Eldon, MO 65026
vincomomma@yahoo.com

Jim Loy
Bulletin Editor and Games Editor
1104 S. Montana, H7
Bozeman, MT 59715
jimloy@jimloy.com

Also visit the ACF at www.usacheckers.com



Please Renew your ACF membership. Regular membership is \$25 per year, Canadian is \$35 (\$25 with e-bulletin option), overseas (Europe/Africa/Australia/New Zealand/Asia) is \$40 (\$25 with e-bulletin option), Junior (e-bulletin only) is \$10 or Associate membership (no ACFB) is \$10. Send dues to the Secretary/Treasurer or the President (addresses on front cover). Membership begins in January and ends in December.

New members: New member dues are pro-rated as shown below, and they will receive only those issues of the *ACFB* from that month (bi-month) on to the end of the year. Of course, they can purchase earlier issues and they can pay for membership in the next year. Other members can pay for two years, too. A pro-rated dues scheme for each membership type is shown below:

Annual Dues Price **\$25** (US members or foreign members with e-bulletin)

Month to Join	rest of year	rest of year + full year
Jan. Feb.	\$25.00	\$50.00
Mar, Apr., May	\$18.75	\$43.75
June, July, Aug.,	\$12.50	\$37.50
Sept., Oct., Nov.,	\$6.25	\$31.25
Dec. (pay for next year)	\$0	\$25.00

Annual Dues Price of **\$35** (Canadian)

rest of year	rest of year + full year
\$35.00	\$70.00
\$26.25	\$61.25
\$17.50	\$42.50
\$8.75	\$43.75
\$0	\$35.00

Annual Dues Price of **\$40** (Overseas members outside of North America)

Month to Join	rest of year	rest of year + full year
Jan. Feb.	\$40.00	\$80.00
Mar, Apr., May	\$30.00	\$70.00
June, July, Aug.,	\$20.00	\$60.00
Sept., Oct., Nov.,	\$10.00	\$50.00
Dec. (pay for next year)	\$0	\$40.00

Annual Dues Price **\$10** (Junior & Associate Members)

rest of year	rest of year + full year
\$10.00	\$20.00
\$7.50	\$17.50
\$5.00	\$15.00
\$2.50	\$12.50
\$0	\$10.00

Tournament directors who accept memberships may wish to have this chart handy at tournament registration. New members paying through ACF Store should see the correct dollar amount there, plus a small fee for using PayPal. Rich Beckwith, ACF Player Rep and modified by Jim Loy.

Hello ACF members:

Today I received back 8 December ACF Bulletins. Three came back with a yellow sticker attached reading "TEMPORARILY AWAY." That is nice, except every bulletin your ACF gets back costs \$1.22. The others had new address affixed by the Post Office and cost your ACF \$1.22 to get back with new addresses affixed by PO. Post Office will affix new addresses, but will not forward. If you move, please let your ACF know, thanks!!

Sincerely: Alan Millhone, President, American Checker Federation "LEAVE NO MEMBER BEHIND"

More books for sale: See the ads at the bottoms of Nat. Ty. pages 102 and 104 and inside back cover. Concerning the ads in the December *ACFB*, please let me know if your ad should be removed or changed for Dec. 2010.

Correction: In *ACFB* #339, I misspelled "Danish" when reporting the results of the Danish Open.

Joe Schwartz has mailed me his GAYP Nat. games. So eleven matches were not turned in. And notice that there will be **no Florida Open** this year.

WCDF Events (shortened by Jim Loy): 2010 Ron King – Richard Beckwith, GAYP WCM, provisionally Oct. 5-10, at the Rodeway Inn & Medina Conference Center, Medina, Ohio USA in 2010. Wilma Wolverton has declined to challenge for the Women's World GAYP Championship and the runnerup, Joan Caws has also declined.

A bid has been accepted from the Irish Draughts Association to host the 2010 Qualifying Tournament at the "Radisson Hotel" at Dublin Airport, Dublin, Ireland, from Wednesday 27th to Saturday 30th October 2010. (The Irish Open will be held at the same venue from Saturday 23rd Oct 2010, to Tuesday 26th Oct 2010.) The winner will challenge Alex Moiseyev for the World Title in 2011. There will also be Women's and Youth Qualifiers.

See the National Ty. news and rule changes on the next page.

2010 National Tournament News and Rule Changes
by Richard Beckwith (beckwith24@msn.com)

The 2010 ACF 3-Move National Tournament bid was awarded to John Acker for the Days Inn in Springfield, Illinois in honor of the late Richard Fortman. Springfield was Mr. Fortman's hometown. I am grateful for John's hard work at this bid and appreciate his enthusiasm at getting an early start with publicity, and for arranging a venue with free playing room and various door prizes. See John's site at <http://checkers2010.info> for ongoing tournament detail. The hotel is located off an interstate with several restaurants nearby. Three proposed differences in format were noted within the bid.

- The tournament will run Sunday, August 1 to Thursday, August 5, rather than the usual Monday start.
- The bid did not include a separate youth tournament. The youth champion (21 and under) will be decided by the highest finisher in the main tournament, as had been the case in many Nationals of the past.
- The Masters will have 5 days of play and 2 two-game rounds occurring in Rds. 1 & 8. Majors and Minors will play 8 four-game rounds.

On a related topic, I note that Gene Lindsay's fund will take effect in this National. (Thank you, Gene!) Donations are welcome and may be sent to John Acker, 668 Stinchcomb Dr. #10, Columbus, OH 43202, or on the Store/Donations page here. Donors with at least \$20 will receive a copy of select games.

All checkers federations have been requested by WCDF to begin the process of harmonizing rules of the game within their respective federations. This international effort at uniformity is a step that is needed in order to be taken seriously by FMJD & the IOC (Olympic)-application folks. These rule changes do not affect the way we score tournaments, number of rounds, tough deck, etc., but rather issues dealing with the rules of a single game. The full WCDF rules, issued in 2008, can be viewed at www.usacheckers.com (*Classroom* menu). Hugh Devlin, WCDF President, recently distributed an article explaining the rationale for this process. Please contact me if you wish for me to send this lengthy article by e-mail. Below I will summarize some proposed changes to our traditional National tournament rules copy that will be available at the tournament:

- A draw may be claimed if a position repeats for the third time, or if the defender can demonstrate to the referee that no progress has been made within the opponent's last 40 moves. In other words, 40-move counts can now be claimed retroactively provided all moves were recorded, and provided the referee verifies "no progress" was made.
- Electronic communication devices are not permitted during play, unless authorized by the tournament controller. Anyone caught with a mobile phone ringing during a game will forfeit the game. While I certainly hope this rule never needs to be applied (and we will post reminders), such a rule has become standard in major gaming events internationally, including the 2008 Beijing WMSG. In the recent Isle of Wight qualifier, some players turned in their phones to the referee's table during play, and there were no problems. I have seen countless ringing interruptions in past U.S. Nationals and other events.
- Rules concerning handling of illegal moves will reflect WCDF language. In short, the first offense should be claimed before making the next move. After this initial warning, a second illegal move offense of any type within the same game requires forfeiture of the game. There is no penalty for either adjusting (with permission) or accidentally displacing pieces.
- Players in time trouble (less than five minutes before time control on their clock) are not obligated to record moves, but may simply place a tick on their scoresheet. The moves should be promptly recovered for each tick mark after the time control period is passed. "Two-minute warnings" of an impending flag fall are no longer required.

In closing, I hope everyone will consider making plans for this year's National. In addition to honoring Mr. Fortman, I anticipate a lot of nice perks (currently in the planning stages) to this year's tournament.

Tournament Results

Reminder: We would like to see how much prize money each player won. See the beginning of the Tournament Calendar below for information on the reporting of results.

Kentucky Open Checker Tournament was held on Saturday, November 7th 2009 at La Quinta Inn, 1751 Lexington Road, Richmond, Kentucky. (Five two game rounds of 3-Move Round Robin)

1	Dr. Robert Shuffett	Greensburg	KY	101044	2164	13
2	Don Brattin	Berea	KY	101036	2200	12
3-4 tie	Dale Hedrick	Lenoir City	TN	101205	1964	10
3-4 tie	Gary Wilson	Alexandria	KY	101215	1921	10
5	Shelby Mays	Williamsburg	KY	101271	1852	5
6	Herbert Reed	Park City	KY	101033	1993	2

Congratulations to Dr. Robert Shuffett for winning the 2009 Kentucky Open Tournament and becoming the new Kentucky State Champion! Thanks to Don Brattin our Tournament Director & Leon Creek, Referee & Scorekeeper. Ratings from WCDF Site – January/June 2009 – No. 4. Submitted by Leon Creek and Official Crosstable

2009 Alabama Open & District 5 Basil Case Memorial November 13th & 14th – Friday & Saturday in the meeting room in Galley Restaurant at Imperial Inn, Haleyville, AL. District 5 contains States: Alabama, Kentucky, Louisiana, Mississippi, and Tennessee – District Manager: Dallas Ramsey

Masters:

1	GM Alex Moiseyev	Dublin, OH	101001	2547	24	95	\$170.00
2	IM John Webster	Stoneville, NC	101015	2377	17	108	\$103.34
3	Frank Davis	Clarksville, TN	101204	2147	17	103	\$103.33
4	IM Larry Keen	Halls, TN	101013	2337	17	102	\$103.33
5	Earle Sweatmon	Kaufman, TX	101185	2009	14	92	\$75.00
6	CM Albert Tucker	Minden, LA	101060	2238	14	87	\$75.00
7	Larry Pollard	Brilliant, AL	101131	2133	13	94	\$47.50
8/9	Josh Armstrong	Riverside, AL	101126	2096	13	84	\$47.50
8/9	Ray Dionisio	Darien, IL	101039	2250	13	84	\$47.50
10	Teal Stanley	Greensboro, NC	101107	2083	13	81	\$47.50
11	Dallas Ramsey	Pine Hill, AL	101158	1903	11	72	\$40.00
12	Clyde Hallmark	Russellville, AL	101292	1775	2	79	\$30.00

Majors:

1	Mike Choate	Madisonville, TN	101xxx		19	99	\$ 90.00
2	Clifford Daniels	Preston, MS	101294	1824	19	96	\$90.00
3	Lamar McBrayer	Calhoun, GA	101105	2018	17		\$65.00
4	Hollis McClard	Lafayette, TN	101123	1866	16		\$50.00
5	Roy Harben	Guys, TN	101xxx		15	95	\$37.00
6	Lynn Steelman	Crandall, GA	101101	2001	15	88	\$37.00
7	Bobby Blankenship	Guys, TN	101xxx		15	82	\$37.00
8	Ken Shultz	Cosby, TN	101114	1889	14		\$30.00
9	Earl Harvell	Princeton, TX	101130	1855	13		\$30.00
10	Ted Williamson	Kenova, WV	101321	1771	12	87	\$23.00
11	Ken Christian	Watertown, TN	101076	1864	12	85	\$23.00
12	Harold Thornton	Booneville, MS	101xxx		12	77	\$23.00
13	Leonard Hickman	Culleoka, TN	101147	1838	10		\$20.00

Minors:

1	WIM Wilma Wolverton	Grain Valley, MO	101091	1696	20		\$ 75.00
2	Gayle Helterbrand	Cabool, MO	101104	1876	19		\$60.00

3	Danny Hughes	Niota, TN	101xxx		17	\$50.00
4	James Atkins	Julian, NC	101384	1665	15	\$40.00
5	Bill Stanley	Greensboro, NC	101214	1587	13	\$35.00
6	J.R. Smith	Greensboro, NC	101124	1677	12	\$30.00
7	Thurston Butler	Columbus, MS	101xxx		10	\$25.00
8	Royce Frederick	Bear Creek, AL	101386	1698	6	\$20.00

3-Move / Seven 2 game rounds (Swiss) of 1¼ hour per game playing 4 rounds Friday and 1 hour per game playing 3 rounds Saturday. The Alabama State / District 5 Open Checker Tournament was represented by 33 players from eleven states: 10 from TN, 5 from AL, and NC, 3 from MS, 2 from TX, GA, & MO, and 1 each from OH, LA, IL, & WV. Congratulations to GM Alex Moiseyev as First Place Winner in the 2009 Alabama State / District 5 Masters Division. Congratulations to Frank Davis who played strong considering he recently spent 6 months in the hospital and won the 2009 District 5 Championship. Congratulations to Larry Pollard and Josh Armstrong who are the 2009 Alabama State Co-Champions. They tied in points and agreed to share the Alabama State Co-Championship before honor points were determined. This is Pollard's eleventh Alabama State Title. Congratulations to Mike Choate as First Place Winner in the 2009 Alabama State / District 5 Majors Division. Congratulations to WIM Wilma Wolverton as First Place Winner in the 2009 Alabama State / District 5 Minors Division. All players who won title positions in this tournament received cash and trophies. Total Prize Fund was \$1,780.00 split \$890 Masters, \$555 Majors, and \$335 Minors, paying completely thru all division entries. Numerous door prizes, welcome bags were given out from local merchants. Many donated merchandise, money, food, prizes, etc. Alex Moiseyev donated a copy of his latest book "Sixth" to be raffled off with proceeds going toward prize fund. Earle Sweatmon won this. Ratings from WDCF January/June 2009 – No. 4 T separates player's opponent from player's accumulated game points. Win is 2 points, Draw is 1, Bye is 3. GM stands for Grand Master, IM for International Master, CM for Candidate Master, WIM stands for Women's International Master. A special thank you to Larry Pollard and Dallas Ramsey for sponsoring this wonderful tournament, an annual event that gets larger and better by the year. 18in2006, 27in07, 30in08, 33in09. A big thank you to Frank Davis – Tournament Director & Referee and Mary – Scorekeeper. The tournament opening ceremony presented all players a warm welcome to Haleyville by Mayor Pro-tem, "Bicycle" Richard Bittinger, and Mayor Ken Suneri dropping by later. We appreciate Kelly Cummings, Larry Pollard's daughter for helping with door prizes, welcome bags, refreshments/drinks/fruit, large cooler of drinks, bottle water, catered vegetable & dip platter, an assorted cold cut sandwich tray available throughout our tournament. We also appreciated the presence of Mr. Ronald and Emogene Raburn and her sister & husband Horace & Esther Mann at the tournament who are both daughters of late Basil G. Case. The newspaper and HBTV 5 & HBTV.us – was there, taking video, pictures, and interviewing players. Frank Davis mailed the Official Crosstable November 19, 2009.

Tournament Calendar

Important information: Tournament organizers, see the ACF abbreviated guidelines on the inside back cover of the June 2006 *ACFB*. Tournament announcements and results should now be sent to J. R. Smith at jrsmith2@triad.rr.com or 3007 Robinhood Drive, Greensboro, NC 27408. You may also wish to send a copy to dstallsworth@stjoelive.com (Missouri Newsletter), beckwith24@msn.com (for announcements only), and tournaments@usacheckers.com (for results). An electronic updated calendar of events is posted at www.nccheckers.org and at www.usacheckers.com. Our bulletin editor will pull the info from these sites. Tournament results should include the format, full names, state of residence, point totals, prize distribution, and any titles awarded. Results should also include round-by-round information (normally found on main scoresheet) for the purpose of computing ratings for your participants. If ratings info is sent by e-mail, please copy Patrick Parker at patrickhasfun@gmail.com.

2010 Tennessee State Open Tournament March 5th – 7th 2010. American Best Value Inn & Suite, in Lebanon, TN The inn is located on Highway 231 (822 Cumberland Street) near I-40 (take exit 238 north off I-40). The tournament consists of 3 divisions. Two rounds will be played on Friday, four on Saturday, and two on Sunday. Registration will begin at 1 PM followed by a business meeting at 3 PM. Play will start at 4 PM on Friday and end Sunday at 1 PM. For reservations, call 1-615-449-5781 and tell them you are a checker player. The room rates will be \$42.00 plus tax. Please make your reservations early. For more information, call Frank Davis at 1-931-552-4246. Submitted by Frank Davis.
No Florida Open this year – submitted by Joe Schwartz.

Northern Ireland Open Checker Tournament Tuesday, Wednesday, and Thursday – April 6th – 8th 2010. Easter week, Tuesday – Wednesday – Thursday (Easter Sunday is April 4th). Tuesday 6th thru Thursday 8th of April, 2010 at The Kinturk Cultural Center in Ardboe. Approximately 10 miles from Cookstown, Ireland. 2 Divisions: Seniors & Masters with 3 rounds of play per day. Play begins at 10 am each morning with registration required at 9:30 am on Tuesday. Francis McNally will take on Myles Hannigan in a 12 game match during the 3 days. Each player is putting forward £1000 with the winner taking all. John McElhone, 105 Creagh Road, Castledawson, Co. Derry, N. Ireland BT45 8EY john@creaghprecisionjoinery.co.uk

105th Illinois State Checker Tournament will be held on April 10th & 11th, 2010 at the Illinois Centre Mall, which is located near the intersection of 57 and State Highway 13 (Exit 54B), Marion, Illinois. Registration on Saturday is from 8:00-9:00 a.m. with the business meeting at 9:00 a.m. and playing beginning at 9:45 a.m. There will be four rounds on Saturday and three on Sunday. I hope to have enough players for a “C” division to attract beginners. The entry fee will be \$10.00. A recommended motel is the Super 8 in Marion, 2601 W. Deyoung St, Illinois. Phone number for the Super 8 is 618-993-5577. This is a newly renovated and very clean motel. Room rates are \$45.00 plus tax. Directions to Super 8 is located to the left off the first stop light West of Exit 54 B. The mall is located at the 3-rd stop light west of the same exit. Turn right at this third light and go to the back of the mall toward the Target parking lot. Park in the lot before Target and the door will lead to the food court where we will be playing. For more information please call Gene Ellison, at 618-962-3321 or email: gellison@hamiltoncom.net. The American Checker Federation requires membership (\$25.00) for all participants at ACF-sanctioned tournament. All Class “A” players must have ACF membership to play. Class “B” player will not be required to have ACF or Associate membership to play this year.

West Tennessee Open Strawberry Festival Checker Tournament--May 7 and 8 at the Regions Bank, 1214 Main St., Humboldt, TN. Same location as past years. Play will begin Friday May 8 at 9:00am and continue until Saturday at 2:00pm. Frank and Mary Davis will again be referee and scorekeeper. We will have a good prize fund, free food and door prizes. From I-40(Jackson, Tn.) take exit 80B 14 miles to Humboldt. Motels:

1. Deerfield Inn, 45 bypass, Kingsize bed \$39.99, Two double beds \$45.99 (731-824-4770). This one is recommended.
2. Heritage Inn, 3350 East End. Kingsize bed \$46.95, two double beds \$51.95 (731-784-2278)
3. Regal Inn, 618 N. 22nd Ave., Kingsize \$38, two double beds \$45 (731-784-9693)

Contact Larry Keen 731-836-5546 or 731-413-8310.

2010 North Carolina Open Checker Tournament will be held on May 14th & 15th 2010 in Siler City at Bestfood Cafeteria, Chatham Plaza Shp Court on Hwy 64

2010 Nebraska 112th 3-Move Open Saturday – May 22nd. Old Country Buffet, 7540 Dodge Street, Omaha, Nebraska 68114 – The OCB serves a great breakfast & Lunch. Tournament is 6-rounds – one day, 45 minutes per game. Registration 8:00 a.m. Saturday. Play begins 9:00 a.m. The entry fee will go into the prize fund and given back to the players after some miscellaneous expenses. There is a fee of \$8.50 that has to be paid at the door for your breakfast/lunch. The food is outstanding. You will have to eat when time allows. We will not break for lunch. If you come I-29 North or South, take the I-680 West exit to 72nd Street North. Take the 72nd Street exit North off of I-680 whether you are coming from the East or West on I-680. There are several motels right there, a block off of the I-680 exit. Dodge Street is about 1½ miles North of I-680 on 72nd Street. Turn left on Dodge Street, the OCB is on the right side by Toys R US. Contact Dave Stovie, Nebraska Checkers Association at necheckers@q.com or 402-541-3534

2010 Texas State & District 8 Tournament June 11th & 12th (Friday & Saturday), beginning with a short business meeting at 8:30 a.m. on Friday, and 8:00 am on Saturday. The tournament will take place at the meeting room of the Super 8 Motel, 910 N. Central Expressway (on Highway 75), McKinney, TX Phone # 972-548-8880. Same place as last 3 years. The room rate is \$59.00 Call Faye Harvell @ 972-548-0049 for any questions. Motel management ask for reservations to be made by June 1st if possible. This is their busiest month (Bed are two queen size or king.) Seven rounds will be played time permitting, 4 on Friday and 3 on Saturday. The entrance fee is \$20.00, ACF membership is required \$25.00 yearly or 12.50 for 6 mo., which may be paid at registration of tournament and will be forward to ACF. Information submitted by Faye Mounger and Hugh Hawkins. Call Faye 972-548-0049 or e-mail fayemounger@att.net; Hugh 903-532-6757 or e-mail hawk-1@verizon.net.

Club Calendar

Kings Row C.C. in Omaha, Ne. We are going to have a city tournament in August and a club championship in September. We will be promoting ACF and should bring several new members. Submitted by Dave Stovie kingsrow@cox.net, 2222 South 148 Ave. Omaha, Ne. 68144.

Burlington Checker Club (Burlington, NC) meets every Thursday evening from 6:00 to 9:00 at John Kernodie Activities Center, 1535 S. Melbane St. Call Center at 222-5135 or Mike Ross 584-8652, Bill McClintock 674-5402 or J. R. Smith 228-6620. Submitted by J. R. Smith.

Durham Checker Club, contact: Wallace Clayton, 917 Andrews Chapel Road, Durham, NC 27703-8952, phone: 919-596-1091. Checker Club in Durham County, located on Leesville Road at Len's Cross Roads Community House next to Fire Station. They meets every morning from 8:30 – 10:00.

Raleigh Checker Club, contact Don Andrews 919-431-9465 donandrews04@Yahoo.com.

If anyone is ever in the **Lancaster County area, PA. USA.....**every Friday, there is an auction/farmers market/ flea market called "Green Dragon". It is right outside of Ephrata, along Route 272....you cannot miss the signs. There is a fruit stand where the Amish and Mennonite gather to play...these are pure crossboard players, never heard of the ACF, book lines, etc., but are very strong nonetheless.....most games are played "blitz", but they will slow down and play a game with you...! If you ever stop by, tell them that H i n n e r s h i t z from Reading, PA. sent you..... " A splendid time is guaranteed for all....!!!"

Hello checkers players in Anchorage, Alaska... **Anchorage Senior Center** has a very nice game room!

Pleasant Grove Senior Center, Pleasant Grove, NC. The center is open from 9 a.m. till 1 p.m. Monday through Friday. Thursday — 10 a.m., checkers competition (also other activities). For more information, call Roxie Lee at 639-4061.

Shelton Senior Center, 81 Wheeler Street, Shelton, CT 06484 on the 4th Tuesday of each month at 1:00 PM to 5:00 PM. Everyone is invited. Bring your own board. Submitted by James W. Bracnaro.

Madisonville, TN. Mike Choate (423) 442-3624, 213 Henderson Drive, Madisonville, TN 37354 opens his home to 6 or more regular players who converge there for a competitive evening of checkers. They alternate their weekends (Friday or Saturday) event to Sweetwater, TN. the home of Hubert Martin, 114 Buena Vista Ave, Sweetwater, TN 37874-3305 (423) 337-7792 every other weekend. Call and get their schedule...

Murphy, NC. A group of local checker players meet every Thursday at 5:00 PM at the Carpet Mart in Murphy. They have a comfortable setup in the back. address: 1395 W US Highway 64, Murphy, NC 28906 Phone Bill or Teddy Cook for information: (828) 837-7491.

Obituary – My trophies at last I lay down

Tony Kozenski has passed away on October 24th 2009. Alex Moiseyev says this: Nothing to say ... Tony was my friend in mind, first (and last) coach in checkers, man from whom I learned everything. Fantastically sad news. After Tony left us, it will be a permanent hole in my soul and heart. He was a MAN. Tony, if you read this – I wish you best in your new life ...

2010 BC (part 25), by Jim Loy

I will collect these corrections into a *Basic Checkers Vol. 8*, later this year. Have I missed anything?

#6: 9-13 22-18 11-15 18-11 8-15 21-17 13-22 25-11 7-16 24-20 3-8 20-11 8-15 28-24 4-8 24-20 8-11 29-25 5-9 25-21 1-5 26-22 10-14 22-17 14-18 23-14 9-18 31-26 12-16 32-28 6-9 26-23 2-6 23-14 9-18 17-14 18-23 27-18 15-22 28-24 22-25 21-17 6-9 draw, M. Tinsley – P. Thompson, 1960 practice, is the game mentioned in *BC* vol. I, page 18, at the end of note F.

Opening #28 note C should mention that the usual 21-17 line of the Double Corner Dyke is shown in more detail under opening #29 note C.

#34: 9-14 23-18 14-23 27-18 11-15 (another strong attack mentioned in note C) 18-11 8-15 22-18 15-22 25-18 4-8 may transpose back to note C.

#48: 10-14 22-18 11-15 18-11 8-15 24-20 6-10 28-24 1-6 23-19 4-8? (note G) 25-22 9-13 (1st parentheses) = 9-13 22-18 6-9 25-22 11-15 18-11 8-15 24-20 4-8 28-24 1-6 23-19 9-14 draw (not a loss)

#50C, parentheses at the bottom of page 36, seem to belong to note B, 2nd parentheses, third move (26-23) where the two asterisks merely signify the footnote.

#61: 10-14 24-20 14-18 23-14 9-18 22-15 11-18 21-17 8-11 17-13 7-10 25-21 10-14 28-24 4-8 29-25 3-7 24-19 6-10 26-23 = opening #56 near the beginning of note I

#64: 10-15 21-17 9-13 17-14 11-16 14-9 (the Dark Continent Attack, which is much stronger than it looks) 5-14 22-18 15-22 25-9 draw, and various moves have been played here.

#66: 10-15 21-17 15-18 22-15 11-18 23-14 9-18 25-21 8-11 29-25 5-9 17-13 9-14 26-23 11-15 24-20 (note D) 12-16 20-11 7-16 to opening #71 note O, not Q.

#98: 11-15 23-19 8-11 22-17 11-16(D) 25-22? (Kentucky Glasgow, note E in *BC*) 16-23 27-11 7-16 32-27 9-14 29-25 (26-23 probably transposes back to this line) 4-8 (16-20 first may be more restrictive) 26-23 5-9 17-13 16-20 23-19 10-15!! (3-7 PP) 19-10 6-15 13-6 1-10 30-26 8-11 RW (seems to bust the Kentucky Glasgow)

D) 15-18 (the Center, seldom played, is apparently not mentioned in *BC*; 9-13 17-14 10-17 21-14 Laird and Lady is covered in *BC* opening #89) 19-15 10-19 24-8 4-11 28-24 11-15 17-14 draw PP.

#99: 11-15 23-19 9-13 26-23 (note B2) 6-9 22-18 15-22 25-18 9-14 18-9 5-14 29-25 8-11 31-26 11-15 25-22 = note D, first parentheses

Opening #103, note H in *ACFB* #338, p.7, first parentheses, credit L. Levitt – T. Landry, 1973 IM instead of Nemesis.

#107: 11-16 21-17 9-13 25-21 16-19 (begins note C) 23-16 12-19 24-15 10-19 17-14 6-9 29-25 (note C1) 9-18 22-15 5-9 27-24 (*BC* shows 25-22 in some detail and never returns to 27-24) 9-14 15-10 7-11 24-15 11-18 26-22 2-6 22-15 14-18 28-24 18-22 25-18 8-11 15-8 6-22 21-17 4-11 17-14 13-17 24-19 (better than 14-10 Red strong, A. Long – E. Hunt, 1936 WCM) draw, N. Rubin

#122: 11-16 24-19 7-11 22-18 3-7(D1) 25-22 11-15 18-11 8-24 28-19 4-8 29-25(H) 8-11 22-18 9-13 26-22 6-9 18-15 11-18 22-6 1-10 25-22 9-14 22-18 7-11 18-9 5-14 27-24 16-20 32-28 20-27 31-24 11-15 24-20 15-24 28-19 2-7 20-16 14-17 draw, E. Hunt – A. Long, 1936 WCM

D1) 11-15 18-11 8-24 27-11 3-8 28-24 8-15 24-20 4-8 20-16 “WW,” may draw

H) 22-18 9-13 (10-14 26-22 draw? or 29-25 6-10 draw, and I haven’t found the Cowie – Hellman game) 26-22 8-11 29-25 6-9 27-24 16-20 31-26 20-27 18-14 “draw, PP,” continue 9-18 22-8 27-31 25-22 13-17 RW

#123: 11-16 24-19 8-11 22-18 4-8(B) 25-22 16-20 22-17 11-16 26-22(G) 9-14 18-9 6-13 30-26 5-9 29-25 2-6(I) 17-14 9-18 22-15 10-14 28-24(K) 7-10 25-22 14-18 23-7 16-30 15-10 6-15 31-26 3-10 21-17 30-23 27-4 20-27 32-23 10-15 draw, D. Lafferty – M. Tinsley, practice

B) 10-14 26-22 = 11-16 23-18 10-14 26-23 8-11 24-19, where *BC* (“B/C” means “Bristol Cross” in *BC*) says that this is shown under opening #121, but play 16-20 next, to complete that transposition G) 30-25 10-14 is a draw PP

I) 9-14 19-15 10-19 17-10 7-14 22-18 8-11 18-9 11-15 25-22 3-7 9-5 7-10 draw, continue 28-24 19-28 23-18 15-19 27-24 20-27 31-6 2-9 18-15 16-19 15-11 12-16 11-7 19-24 7-2 24-27 draw

K) 26-22 14-18 RW, D. Lafferty – E. Fuller, may draw

#124: 11-16 24-19 16-20 22-18 8-11 18-14 9-18 23-14 10-17 21-14 11-16 25-22(F) 16-23 27-18 4-8 29-25 8-11 32-27 6-9 26-23 1-6 30-26 11-16 18-15 9-18 23-14 7-10 14-7 3-19 27-24 20-27 31-15 5-9 15-11 6-10 11-8 10-15 26-23 9-13 25-21 15-19 23-18 19-24 draw, E. Fuller – M. Tinsley, 1946 Nat.

F) 27-23 6-9 23-18 16-23 26-19 4-8 25-21 “RW,” 1970 Nat., but the notes in the *ACFB* indicate that Red is strong and that it’s a likely draw

#124A: 11-16 24-20 7-11 21-17 9-14(D1,D2) 25-21 3-7 28-24 16-19 24-15 11-25 29-22 8-11 17-13 11-16 20-11 7-16 23-19 16-23 26-19 2-7 30-26 14-17 21-14 10-17 26-23 17-26 31-22 6-9 13-6 1-10 22-17 5-9 17-13 9-14 13-9 14-18 23-14 10-17 9-6 4-8(Q2) 6-2 8-11 2-6 17-22 6-9 22-26 9-14 26-31 27-24 11-16 19-15 31-27 32-23 16-19 draw, R. Fortman

D1) 3-7 25-21 16-19 23-16 12-19 29-25 11-16 20-11 8-15 27-23 4-8 23-16 8-12 17-13 12-19 32-27 9-14 27-24 14-18 draw or 5-9 draw.

D2) 9-13 25-21 6-9 (D2c: 3-7 29-25 16-19 23-16 12-19 17-14 10-17 21-14 6-10 27-24, WW B. Case, may draw) 23-18 16-19 (3-7 draw?) may be a WW

Q2) 7-10 6-2 10-14 2-7 17-22 7-11 22-26 19-15 “draw,” is a WW

#125: 11-16 24-20 16-19 23-16 12-19 22-18 9-14(C1z) 18-9 5-14 25-22 10-15(postscript-G) 22-17 6-10(G) 29-25 8-11(I1,I2) 17-13(J) 4-8 25-22 2-6 22-17 8-12 27-23 3-8 23-16 12-19 26-23 19-26 30-23 8-12 28-24 15-18 24-19 18-27 31-24 11-15 20-16 15-18 24-20 18-22 19-15 12-19 20-16 14-18 15-11 18-23 11-2 1-5 draw, A. Jordan

C1z) 10-14 18-15 7-10 25-22 14-18 29-25 9-14 20-16 5-9 16-11 3-7 27-23 7-16 32-27 8-12 21-17 draw, J. Caldwell – D. Vestal, Red is strong

G) 7-10 20-16 2-7 (8-12 16-11 “WW,” Wyllie – Martins, may be a draw) 30-25 1-5 27-24 may be a RW

I1) 8-12 17-13 4-8 25-22 14-18 22-17 10-14 17-10 7-14 20-16 3-7 27-24 8-11 24-20 2-6 30-25 18-23 21-17 14-30 28-24 draw, Fuller – Hellman. I too haven’t found this game elsewhere, except for C. Reno’s *Work of the Pentium*, which was written later.

I2) 19-24 28-19 15-24 25-22 8-11 17-13 4-8 13-9 8-12 22-17 24-28 17-13 14-17 21-14 10-17 26-23 “RW,” B. Case – W. Ryan, may be a draw

J) 25-22 14-18 30-25 4-8 17-14 10-17 21-14 8-12 27-23 18-27 31-24 (32-16 may draw) 11-16 20-11 7-16 25-21 (32-27 16-20 22-17 2-6! draw) 16-20 32-27 draw W. Hellman

postscript-G) 8-12 22-17 4-8 29-25 8-11 27-24 11-15 32-27 12-16 20-11 7-16 24-20 3-7 20-11 7-16 25-22 14-18 (note G begins) 30-25 16-20 “RW,” continue 17-14 draw

#126: 12-16 21-17 9-13 25-21(v.1) 16-19(E3) 23-16 11-20 17-14 10-17 21-14 6-10 29-25 10-17 25-21 1-6 21-14 6-10 30-25 10-17 25-21 (note J begins:) 2-6 21-14 6-10 22-17 13-22 26-17 8-11 24-19 4-8 27-23(Ju) 8-12 28-24 20-27 31-24 11-15 32-27 7-11 14-7 3-10 17-14 10-17 19-10 17-22 24-20 22-26 23-19 26-31 draw, N. Banks – A. Jordan

E3) 16-20 29-25 11-15? (10-15 draw?) 17-14 10-17 21-14 8-11 23-19 4-8 draw, E. Waterhouse – H. Reynolds, WW?

Ju) 27-24 20-27 31-24 10-15 19-10 5-9 14-5 7-21 5-1 21-25 1-6 25-30 6-10 30-26 32-27 26-22

10-14 11-16 24-20 16-19 27-24 19-23 14-10 22-18 20-16 23-27 16-12? (24-20 27-31 16-11 draw)
18-23 10-15 23-19 15-10 19-16 10-7 3-10 12-3 27-31 3-8 31-26 RW H. Freyer – L. Levitt

Var. 1: 24-20 11-15(L1q) 20-11 7-16 25-21 5-9 23-18 16-20 18-11 8-15 26-23 4-8 23-18 8-11 30-25
(the next two moves are missing, in the book) 2-7 28-24 10-14 17-10 7-23 27-18 20-27 32-23 6-10
21-17 1-5 23-19 15-24 18-14 draw, W. Ryan – W. Hellman, 1949 WCM g.1

L1q) 5-9 28-24 11-15 20-11 7-16 24-20 9-14 20-11 14-21 27-24 1-5? 32-28? (23-19 WW?) 6-9
23-18 8-12 24-19 15-24 28-19 10-14 (9-14 draw) 18-15 3-7 22-17 draw, R. Burroughs – H. Freyer,
continue 7-23 17-10 23-27 31-24 12-16 24-19 WW

#127: 12-16 21-17 9-14 17-13(B,v.1) 16-19 24-15 10-19 23-16 11-20 26-23(E) 8-11 22-18 7-10
18-9 5-14 25-22 4-8 29-25 14-17 31-26 10-15 25-21(L) 1-5 21-14 6-9 13-6 2-25 30-21 11-16 21-17
8-12 17-14 3-7 26-22 15-19 23-18 7-11 28-24 19-28 22-17 11-15 18-11 16-19 27-24 A. Jordan –
L. Ginsberg, 1921 ACM g.188G

B) 25-21 16-19 24-15 11-25 29-22 8-11 28-24 4-8 24-20 8-12 17-13 10-15 22-18 (22-17 7-10 RW?)
15-22 26-10 6-15 27-24 11-16 20-11 7-16 24-20 16-19 “RW,” draws

E) 25-21 8-11 22-17 7-10 26-23 4-8 23-19 11-15 29-25 15-24 28-19 8-11 19-16 2-7 30-26 11-15
32-28 5-9 26-23 15-19 31-26 14-18 23-5 19-24 28-19 10-14 “RW,” R. Banks – W. Ryan, and the
simplest draw is 17-10 6-31 26-22 31-27 13-9 27-23 9-6 draw

L) 28-24 8-12 23-19 11-16 19-10 6-15 32-28 “RW,” D. Oldbury – E. Bruch, R. strong, but this may
be a draw

Var. 1: 24-19 (Minotaur) 14-21 19-12 11-15(var.2) 22-17(C1,C2,C3) 5-9 (15-19 23-16 8-11 to var.
2) 17-13(D) 9-14 28-24 8-11 25-22 14-18(E) 23-14 10-17 27-23 11-16 24-20 7-11(F) 32-28(G) 1-5
31-27(H) 2-7 27-24 7-10 23-19(I) 16-23 26-19 17-26 30-23 4-8 13-9 draw, C. Cantor – M. Tinsley,
1946 practice game. The following corrections (underlined> are from my WWW pages.

C1) 28-24 5-9 24-20(z) 8-11 27-24 9-14 22-18 to a draw, M. Tinsley – P. Davis, 1975 Southern Ty,
in R. Shuffett’s *Checkers the Tinsley Way*, opening #127

z) 23-18 (22-17 goes into note D or 22-18 goes into note 2 below) 15-19*(z1) 24-15 10-19 and Red
has a better double corner than White, if 22-17 (if 27-23 8-11 etc.) 9-13 17-14 8-11, continue 25-22
11-16 27-23 19-24 or 6-10 seem to draw

z1) 8-11? 26-23 9-13 (11-16 may draw?, Shearer’s *Handbook*, p.135, var. 63) 24-20 WW, L. W.
Taylor – R. Flood, 1962 U.S. Nat.

C2) 22-18 15-22 25-18 8-11 29-25 5-9 28-24 11-16(y) 25-22(x) 4-8 (given to draw in Shearer’s
Handbook, 10-14 to var. 2) 24-20(m) 8-11 27-24 (22-17 21-25 30-21 16-19 shot, RW) 10-14 24-19
7-10 32-28 10-15 19-10 6-15 22-17 15-22 17-10 2-6 26-17 6-15 28-24 9-13 17-14 15-18 31-27
18-22 23-18 22-25 14-10 25-29 18-15 draw, Bell – Sterling, Shearer’s *Handbook*

m) If 22-17 (24-19? 8-11 RW) 16-19 24-15* 10-19 23-16 9-14 17-10 6-22 26-17 8-11 draw, R. L.
Fortman

y) 10-14? 25-22 11-16 18-15 16-19 (16-20 draw?) 23-16 14-18 22-17 9-13(y1) 24-20 13-22 26-17
18-22 16-11 7-16 20-11 22-25 (or 6-9 WW L. Stubblefield – M. Rex, 1973 I-D) 17-14 25-29 12-8
or 14-10 W. powerful, E. F. Hunt

y1) 7-11 (18-22 24-20 22-25 draws) 15-8 4-20 17-13 9-14 24-19 W. strong, E. F. Hunt and M. Banks

– L. Stubblefield, 1975 I-D

x) 24-20 7-11! (1-5 3rd American Ty.) 32-28?(x1) 10-15 18-14 9-18 23-14 15-19 27-23 1-5 23-18 19-23 26-19 16-23 25-22 21-25! 30-21 23-26 14-10 6-15 18-14 26-30 22-17 30-25 14-10 15-19 17-13 19-23 10-6 2-9 13-6 5-9 6-1 9-13 1-5 23-26 long RW, R. L. Fortman – C. Jackson, 1955-61 ACF National Mail Ty.

x1) 18-15 (25-22 10-15 27-24 6-10 23-19 16-23 26-19 9-13 19-16 2-7 31-27 1-6 27-23 13-17 RW, R. L. Fortman) 10-19 32-28 6-10 27-24 10-15* R. L. Fortman, 1981 I-D, continue 25-22 1-6 (9-13 draws, J. Loy) 22-18 15-22 24-8 4-11 26-17 6-10 17-13 (31-26 draw, J. Loy) 10-15 R. strong, R. L. Fortman, 1981 I-D

C3) 27-24 8-11 (5-9 24-20 9-14 seems plausible) 24-20 11-16 (5-9 28-24 9-14 to M. Tinsley – P. Davis in note 1 above) 20-11 7-16 22-18 15-22 25-18 4-8 29-25 8-11 25-22 5-9 22-17 9-14(n) 18-9 6-22 26-17 11-15 draw, L. Munger, Elam's *Checker Board (ECB)*, p.8287, note F

n) 10-15 26-22 6-10? (15-19 draw? H. Carr) 28-24 1-5 31-27 16-20 17-13 9-14 18-9 5-14 13-9 WW, H. Freyer – M. Kemmerer, 1958 U.S. National (ECB, p.8286)

D) 28-24 8-11 (9-13 24-20 13-22 26-17 6-9 17-13 9-14 13-9 8-11 9-6! 2-9 25-22 remarkable draw, D. Oldbury – R. Johnson, 1976 U.S. National) 24-20 4-8 25-22 9-13 23-18? (17-14! 10-17 23-18 15-19 27-23 6-10* draw, R. L. Fortman) 21-25! 30-21 10-14 17-10* 7-30 20-16 11-20 31-26 30-23 27-4 20-24?(D1) 22-18 6-10 29-25 2-7 25-22 1-6 21-17 6-9 12-8! 3-12 4-8 24-28 8-4 7-11 4-8 11-15 18-11 9-14 11-7 14-21 23-18 draw, M. Tinsley – A. Long, 1947 practice

D1) This is a great ending: 2-7! 29-25 6-9 4-8 7-10! 8-4* 10-14 18-15 14-18 4-8 9-14 8-11 13-17 11-16* (15-10 24-27! RW) 24-28 16-19 17-22 19-23 22-29 23-26 1-6 15-11 6-9 11-8 9-13 8-4 3-7 (13-17 4-8 18-22? 26-30 WW) 12-8! 7-10 8-3! 18-22 26-17 13-22 3-7 29-25 4-8 22-26 8-11 25-22 7-2 14-18 2-6 10-14 6-9 26-31 11-7 31-26 7-10 22-17 9-13 26-22 10-15 18-23 13-9 draw!, from my annotations of the Tinsley – Long game, on my WWW pages

E) 4-8? 22-18 15-22 26-17 10-15 17-10 7-14 29-25 15-18 24-20 11-15 (2-7 23-19 14-17 31-26 11-15 long draw, J. Maine – W. Coleman, 4th USA – GB mail match) 20-16 15-19 16-11 8-15 23-16 14-17 31-26 15-19 16-11 19-23 26-19 17-22 draw, D. Lafferty

F) 15-19? (1-5? 20-11 7-16 23-18 15-19 18-15 16-20 32-28 WW, R. Fortman – D. Lafferty, practice) 20-11 7-16 22-18 19-24? (4-8 may draw) 18-14(o,p) 4-8 (16-20 23-19, M. Tinsley, continue 3-7 draw) 29-25 8-11 25-22 (14-9 draw) 16-20 23-19 (23-18 draw?) 11-16 (21-25 30-21 11-16 RW) 14-9* 16-23 26-19 17-26 31-22 WW, M. Tinsley, continue 24-28 19-16 20-24 16-11 3-7 11-8 7-10 9-5 10-14 8-4 21-25 draw or 14-17 draw

o) 18-15! 24-28 (24-27 loses) 15-11 16-20 (1-5 23-18 16-20 18-14 3-7 11-8 WW) 23-19 (29-25 WW) 3-7 11-8 WW

p) 32-28? 24-27 31-24 16-20 24-19 3-8 (20-24 RW) draw, E. Frazier, continue 31-27 23-18 27-23 18-14 17-22 15-10 23-18 13-9 18-15 9-6 15-18 RW

G) 31-27? 15-19* 32-28 6-9*! 13-6 1-10 22-13 19-24 28-19 11-15 RW

H) 29-25 2-7*(q) 28-24(r) 7-10 23-19 16-23 26-19 17-26 31-22 (possible WW, D. Lafferty) 5-9 19-16 (22-17 15-18 19-16 10-15 16-7 3-10 = same) 10-14 16-7 3-10 22-17 14-18 20-16 18-23 R. strong, M. Tinsley (draw)

q) 15-19? 22-18* 17-22 26-17 19-26 31-22 16-19 18-15 (18-14 WW) WW.

r) 23-18 4-8 (5-9 RW) 31-27 6-9 13-6 16-19 22-13 15-31 27-24 31-27 R. best, R. L. Fortman

I) 24-19(s) 15-24 28-19 11-15 20-11 15-24 11-7 (23-18 5-9 11-7 10-14 7-2 draw, M. Chamblee)

24-27 23-18 (7-2 27-31 RW, M. Chamblee, continue 2-9 5-14 23-19 31-27 13-9 draw) 27-31 18-14 6-9* 13-6 10-15 22-13 3-17 RW, M. Chamblee

s) 23-18? 5-9 29-25 4-8 (16-19 RW) R. L. Fortman, continue 18-14 9-18 24-19 WW

Var. 2: 11-16 22-17 (28-24 16-20 to note D) 5-9(C) 17-13(D) 8-11 25-22(E) 11-15 22-17(F) 16-20 29-25 7-11(G) 28-24 4-8 25-22 2-7(H) 23-18 21-25 30-21 10-14 17-10 7-30 31-26 30-23 27-18 20-27 32-23 6-10* 13-6 10-14 18-9 1-10 9-6 (21-17 draws W. Hellman) 11-16* (10-14? 22-17 15-18 17-10 18-27 10-7 WW, W. Hellman) 23-18 8-11 6-2 15-19 2-6 10-15 6-10 16-20 18-14 (“WW,” W. Hellman) 20-24 14-9 24-28 9-6 11-16 6-2 19-24* (16-20? 2-7 19-24 10-19 3-10 22-18 24-27 21-17 WW, W. Hellman) draw, R. Flood.

C) 16-19 (8-11 25-22 4-8 17-13 10-15 22-17 7-10 28-24 16-20 draw E. Hunt – M. Loew, 1960 practice, Van’s 6th Dist. Newsletter) 23-16 8-11 25-22 11-20 17-14 (22-18 A. Long – W. Hellman, 1948 World Champ. Match) 10-17 22-13 4-8 29-25 5-9(CC) 25-22 9-14 22-17 8-11 (6-10? 13-9 draw, J. Howe – K. Todd, *ECB*, game 9735) 17-10 7-14 26-22 14-17 31-26 11-15 27-23 2-7 23-18 15-19 18-14* (18-15? 19-23 RW, continue 21-25 23-18 25-30 18-14 draw) 1-5 22-18 7-11 26-22 draw, J. Caldwell

CC) 8-11 25-22 6-10 (7-10 is a published draw, if Red needs to avoid this line) 26-23 1-6 23-18 (V. Dowsey – J. Downie, 7th USA – GB mail match) 6-9 13-6 2-9 28-24 10-15* (11-16? 31-26 9-13 24-19 16-23 26-19 5-9 18-15 10-14 19-16 long WW, R. Fortman – V. Monteiro, Hayes’ mail ty.) 22-17 (31-26 9-13 18-14 (26-23 draw?) 11-16 26-23 draw, D. McGrath, continue 16-19 23-16 21-25! RW) 15-22 17-13 9-14 13-9, with the issue still in doubt. Continue 22-25 9-6 25-29 6-2 29-25 2-6 25-22 6-9 22-18 24-19 11-16 31-26 16-23 26-19 18-23! 27-18 14-23 9-6 20-24 19-15 7-10 15-11 10-14 RW?

D) 28-24 16-20 17-13 9-14 24-19 8-11 25-22 14-17 19-16 11-15 23-18 15-19 32-28* (18-14? 20-24*! 27-20 21-25! 30-21 19-23 RW, W. Hellman) 1-5(a) 18-15(y) 5-9(x) 15-11 10-15 29-25(w) 9-14 (20-24! 27-20 9-14 31-27 14-18 RW, T. Sheehan) 27-24 20-27 31-24 15-18! 24-15 (22-15 19-23! 26-19 14-18 “R. strong,” K. Todd, draw E. Frazier, *Midwest Checkers*, Jun. 1986) 18-23 26-19 17-26 30-23 21-30! 13-9 6-13 15-10 14-17 10-6 R. best, C. Beebe and K. Todd

a) 4-8 29-25 (18-15? 19-23*! RW, W. Hellman) gave Red problems, K. Todd – G. Zuber, mail game. Continue 1-5 18-14* 20-24 27-20 19-23 26-19 17-26 30-23 21-30 28-24 10-17 16-11 7-16 20-4 30-26 31-22 17-26 23-18 26-31 18-15 31-27 24-20 (15-10 draws, E. Scheidt) 27-23 19-16 23-19 15-11 6-9 draw, E. Scheidt

y) 29-25 5-9 18-14 9-18 22-15 4-8 13-9* 6-13 15-6 2-9 25-22 (27-24 is an easier draw, E. Frazier) 9-14 27-23 20-24 22-18 8-11 18-9 11-20 23-16 24-27 31-24 20-27 9-6 27-31 26-23 (26-22* draws, E. Frazier, *Midwest Checkers*, Oct. 1986) 31-27 23-18 17-22 (27-23* RW, E. Scheidt, *Midwest Checkers*, April 1986) 6-2 27-23 2-11 23-14 11-15 draw, C. Beebe, 1973

x) 4-8? 22-18 17-22 (5-9 draw?) 26-17 19-23 27-24 20-27 31-24 10-19 24-15 23-27 29-25 27-31 25-22 31-27 16-11! 7-16 15-10 W. strong, C. Beebe (WW)

w) 27-24 (27-23 draw?) 20-27 31-24 7-10* 24-20 19-24* (10-14? 12-8 3-12 16-11 WW?, R. L. Fortman) 28-19 15-24 11-7 2-11 16-7 10-15 7-2 24-27 20-16 27-31 16-11(t) draw, R. L. Fortman, continue 3-7* (prevents 11-7) 11-8 (12-8 may draw?, E. Scheidt) 4-11 12-8 15-18 22-15 11-18 2-11 31-22 11-15 18-23 8-3 22-18* 15-22 17-26 RW, E. Scheidt

(2010 BC – continued inside back cover)

Var. 14 off var. 12**JL**

26-23(A) 18-27 32-23 10-14 23-19 15-18(B) 19-15(C) 18-23 15-10 23-27 10-6 27-31 24-20
 14-18 6-2 4-8 2-6 18-23 21-17 23-27 17-14 8-11 14-10 11-15 10-7 15-19 6-10 19-23 28-24
 27-32 24-19 23-26 19-15 32-28 7-3 26-30 10-14 28-24 15-10 24-19 10-6 19-15 3-8 31-26 14-10
 15-18 6-2 30-25 8-11 25-21 10-15 26-22 15-19 draw(D), **Richard Hallett – Ron King, 2008**
Nat. Ty., Masters, round 5 game 3

A – Rare.

B – Suki's (Ron's) scoresheet ends here.

C – 19-16 draw, E. Fuller – E. Scheidt, 1976 Florida Open.

D – M. Banks: "At this point Richard asked the referee for a 40 move count as the position was a well known drawn position. The game continued for 17 more moves before Ron agreed to a drawn game. Hallett defended this Octopus game well!" This game began 11-16 21-17 7-11, and was recorded by M. Banks.

Var. 15 off var. 13**JL**

2-7?(A) 25-21 4-8 27-23 20-27 31-24 8-12(B) 24-19 15-24 28-19 10-14 32-28 11-16 18-15
 16-20 15-10 20-24 10-6(C) 24-27 6-2 7-11 22-17 27-31 17-10 11-16 19-15 31-27 23-18 16-20
 10-6 27-23 6-1 23-14 15-10 14-7 2-11 9-14 1-6 12-16 6-10 14-18 10-15 18-22 15-18 22-26
 18-23 26-30 11-15 3-8 15-18 8-12 21-17 30-25 17-14 25-21 14-10 21-17 10-7 17-13 18-14
 16-19 23-16 12-19 14-18 13-9 7-2 WW(D), **Ron King – Richard Hallett, 2008 Nat. Ty.,**
Masters, round 5 game 4

A – Loses, 3-7 correct, M. Banks.

B – Suki's version of this game goes 10-14 24-19 15-24 28-19 8-12 = same.

C – Suki's scoresheet ends here.

D – A clean refutation of Red's mistake. M. Banks: "With this win Richard Hallett takes the lead after 5 rounds with 16 points and no lost games. Alex Moiseyev and Ron King remained in second with 14 points with both losing to Richard Hallett by 1-0-3 score." The game was recorded by M. Banks. The other two games of this match, two draws, were shown under 10-14 22-18 11-15.

10-15 21-17 9-13 (#64)**Game 71****Jim Loy, annotator**

10-15	22-18	7-10	31-26	16-23	16-23	8-11
21-17	15-22	29-25	3-8	26-19	27-18	2-6
9-13(A)	25-9	4-8(E)	9-5	9-14	20-27	10-15
17-14	16-20(C)	25-21	2-7	18-9	32-23	6-2
11-16	26-22	11-16?(F)	21-17(H)	11-16	12-16	WW(I)
14-9(B,v.1)	8-11	28-24	6-9	9-6	6-2	
5-14	24-19(D)	8-11?(G)	23-18			

Larry Keen – Alex Moiseyev, 2006 Nat. Ty., Masters, round 7 game 3

A – Tyne.

B – Dark Continent Attack.

C – 13-17 is also published to draw. See var. 1 in the Sep. 2006 *MCA Newsletter* or A. Moiseyev's *Selected Games*, which are mentioned below.

D – 29-25 7-10 is mentioned in the 2003 I-D booklet.

E – 11-16 was mentioned in *ACFB #322*.

F – 11-15 seems to draw.

G – The computer suggests that 3-7 or 1-5 or 10-14 may draw, but they may be difficult. For example, my copy of *KingsRow* has not found a solid WW after 1-5 22-18, but it looks bad for Red. A. Moiseyev wrote the following: 10-14* 9-5 (22-18 1-5 18-15 13-17 15-11 6-13 11-4 17-22 draw, A. Moiseyev) 6-9 22-18 13-17 31-26 9-13 18-9 17-22 26-17 13-22 21-17 22-26 draw, A. Moiseyev.

H – L. Keen said he overlooked this move when analyzing 8-11, a few moves earlier.

I – This game was annotated by R. Fortman and A. Moiseyev in the Sep. 2006 *MCA Newsletter* and that was reproduced as game #44 in A. Moiseyev's *Selected Games* from this ty.

Var. 1

JL

24-19 15-24 27-11(A) 8-15 22-17(B) 13-22 25-11(C) 7-16 23-18(D) 4-8(E) 29-25 8-11 28-24 6-10(F) 14-7 3-10 25-21(G) 5-9(H) 24-20! 1-5!(I) 26-23 9-14 18-9 5-14 30-26 2-7!(J) 32-27?(K) 10-15 RW(L), A. Moiseyev – Larry Keen, 2006 Nat. Ty., Masters, round 7 game 4

A – 28-19 draw PP. Superficially, we avoid 27-11 in positions where 8-15 will be the answer, as it strengthens the opponent's center. But this 27-11 is not bad, and Keen needed a win to draw the match, and he was probably familiar with this 27-11 line or the later transpositions that he chose.

B – 32-27 draw, H. Steel – J. Howe, 1959 US v. GB Mail Match, and A. Long – M. Tinsley, 1985 WCM g.3 and several mail games since.

C – = 9-13 22-18 10-15 18-14 (= 10-15 22-17 9-13 17-14) 11-16 21-17 13-22 25-11 8-15 24-19 15-24 27-11.

D – = 11-15 22-17 15-19 24-15 10-19 23-16 12-19 25-22 8-11 22-18 9-14 18-9 6-22 26-17 11-15 C.R.

E – Much more popular than 3-7 draw, P. Lee, *Kear's Encyclopedia* p.416 v.48.

F – Or 2-7 draw PP.

G – 26-23 draw PP.

H – 10-14 draw, R. Fortman – J. Scott, 1958 US v. GB Mail Match from 9-13 22-18 10-15.

I – May be the only draw.

J – 10-15? is weak, but may draw.

K – 32-28 or others draw.

L – Continue 26-22 16-19 23-16 12-19 22-17 14-18 17-14 19-23 27-24 23-27 RW. The other two games of this match, two draws, will be shown under 12-16 21-17 16-20.

New book: *The Checker Games of Richard Jordan*, \$15 (add \$3 for overseas). 34 diagrams, 200 pages (5.5"x8.5"), nice looking book with coil binding. Jim Loy, 1104 S. Montana, H7, Bozeman, MT 59715, email: jimloy@jimloy.com.

10-15 21-17 15-18 (#66)			Game 72	Jim Loy, annotator		
10-15	23-14	17-13	10-14	28-24	3-8	22-6
21-17	9-18	7-10	29-25(E)	1-6	23-19	2-9
15-18	24-19	25-21(B)	11-15?(F)	30-26	6-10	13-6
22-15	(A,v.1,2)	4-8(C)	19-10	8-11	24-20	WW
11-18	8-11	26-23(D)	6-15	26-22	15-24	

Richard Beckwith – Alex Moiseyev, 2008 Nat. Ty., Masters, round 2 game 1

A – = 10-14 24-19 14-18 23-14 9-18 22-15 11-18 21-17. This transposition, and the one in var. 1, are more popular than other moves.

B – 26-23 draw PP.

C – 10-14 draw PP.

D – 28-24 draw, D. Lafferty – E. Rolader, 1977 Southern Open.

E – Back to more popular lines.

F – 11-16 draw, N. Rubin – W. Ryan, 1937 Nat. and several games since. KingsRow suggests that 3-7! (draw PP) is better, with an even game.

Var. 1

JL

24-20(A) 8-11 25-21(B) 6-9(C) 28-24(D) 9-13(E) 26-23(F) 13-22 23-14 1-6 27-23 6-9 32-27(G) 9-18 23-14 11-15* 30-25 15-18 21-17 4-8 24-19 8-11 19-15 11-16 20-11 7-16 17-13 16-19 15-10 12-16 10-6 2-9 13-6 19-23 27-24 16-20 6-2 20-27 31-24 23-26 2-6 26-30 25-21(H) 18-23 24-20 23-27 14-10 30-26 10-7 3-10 6-15 26-23 20-16 23-18 15-10 22-26 29-25* 26-30 16-11* 30-26 11-7?(I) 26-23 7-2 5-9 2-7 9-13 7-2 18-14 RW, Alex Moiseyev – Richard Beckwith, 2008 Nat.

Ty., Masters, round 2 game 2

A – = 10-14 24-20 14-18 23-14 9-18 22-15 11-18 21-17.

B – 17-13 draw PP.

C – Or 4-8 draw PP.

D – 17-13 draw PP.

E – KingsRow recommends 11-15 draw.

F – Or 17-14 draw.

G – 14-10 7-14 30-26 may be interesting.

H – 6-10 may be easier.

I – 10-15* draw.

Good game. The other game of this match, a draw, was shown under 9-13 24-19 6-9.

Var. 2

JL

26-23 6-9 23-14 9-18 30-26 5-9(A) 26-23(B,v.3) 9-14 17-10 7-14 24-19 8-11 28-24 11-16 24-20 3-8 20-11 8-24 27-20 18-27 32-23 14-17 25-22 17-26 31-22 2-7 29-25 7-10 22-18 1-6 25-21 6-9* 21-17 9-13 18-14 13-22 14-7 22-26 7-2 26-31 2-6 31-27 23-19 27-24 19-15 draw(C), Jimmy O'Grady – Phil Schwartzberg, 2008 Nat. Ty., Majors, round 4 game 3

A – 1-6 draw PP.

B – 17-14 draw, A. Morley – J. Block, 1955 Tri-District Mail Ty.

C – A good game.

Var. 3 off var. 2

JL

17-13 9-14 13-9?(A) 8-11 9-5 2-6 24-19 4-8 28-24 6-9(B) 26-23(C) 14-17! 23-14 9-18 25-21?(D)
17-22 24-20 11-15 19-10 7-14 27-24 18-23 24-19 8-11 32-28 3-7 20-16 11-20 19-15 14-18 21-17
22-25 29-22 18-25 17-14 25-29 RW(E), **Phil Schwartzberg – Jimmy O’Grady, 2008 Nat. Ty.,
Majors, round 4 game 4**

A – 25-21 draw, KingsRow.

B – The following may be even stronger: 11-16! 26-22 (26-23? 16-20 31-26 8-11 25-21 11-16 26-22
18-25 29-22 6-9 RW?) 26-22 16-23 22-15 6-9 27-18 14-23 24-19! 7-11 15-10 9-13 25-21 11-16
10-6*!! 1-10 5-1 draw!

C – Or 25-22 Red strong.

D – 25-22! 17-26 31-15 11-18 29-25! 7-10 24-20! 10-14 19-15! 14-17 25-21 17-22 21-17 (15-10?
loses) 22-26 17-14 26-30 14-10 30-26 27-24 draw.

E – A very good game. Schwartzberg took first in the Majors, and O’Grady took second.

10-15 22-17 6-10 (#67)

Game 73

Jim Loy, annotator

10-15 22-17 6-10 17-14(v.1) draw, **Alex Moiseyev – Ron King, 2006 Nat. Ty., Masters, round
8 game 3**

Var. 1

JL

17-13 1-6 23-19(A) 11-16 25-22 draw, **Ron King – Alex Moiseyev, 2006 Nat. Ty., Masters, round
8 game 4**

A – = 10-15 23-19 6-10 22-17 1-6 17-13.

With four short draws, Ron King and Alex Moiseyev (and Richard Hallett, who won a two game
match with Ed Bruch) tied for first place, with King taking first and Moiseyev taking second on
honor points.

GREATEST CHECKER BOOK EVER. That’s what the checker players are saying about the *8th
International Match book* (2005). Others are saying “Wow”, “Outstanding” “No library should be
without this book”, etc. This large, hard cover, stitched book is beautifully illustrated with good size
print and lots of instructive diagrams and important play. A once in a lifetime opportunity at the
bargain price of \$40 for the U.S. and Canada and \$50 overseas. Send your check to the ACF at P.O.
Box # 1, Belpre, Ohio 45714

For sale: Oldbury *Encyclopedia*, new condition, stiff covers, \$65 post paid. C. W. Nuss, 1937 High,
Leavenworth, KS 66048-2166

10-15 22-17 15-19 (#71)			Game 74	Jim Loy, annotator		
10-15	7-16	26-31	27-24	11-16	31-27	19-16
22-17	20-11	11-15	12-8	23-27	16-19	8-12
15-19(A)	3-7(B)	31-27	24-20	16-20	27-31	16-20
24-15	32-23	15-18	9-6	24-28	18-22	32-27
11-18	7-16	13-17	23-19	17-14	31-27	15-18
23-14	29-25	23-19	8-3	28-32	19-15	27-32
9-18	2-6	27-24	20-24	12-16	27-31	18-22
26-23(v.2,3)	25-22	19-15	3-8	27-31	15-18	31-27
6-9	6-9	24-19	24-27	16-19	31-27	28-24?!(F)
23-14	14-10	14-10	8-12	32-27	22-17	27-31
9-18	16-20	17-21	27-24	19-24	27-31	24-19
30-26	10-7	18-22	6-10	27-32	18-22	32-27
5-9	20-27	19-23	19-23	14-18	31-27	19-15
17-14	31-24	15-11	11-7	32-27	22-26	27-32
9-13	9-14	12-16	24-27	24-28	27-31	20-24
26-23(v.1)	7-3	10-7	7-2	27-32	17-22	32-28
1-5	5-9	16-19	27-31	18-23	4-8	24-20
28-24	3-7	20-16	10-14	31-27	26-23	28-32
8-11	9-13	19-24	23-26	23-26	31-27	20-24
24-20	7-11(C)	7-2	14-17	27-31	22-18	32-28
11-15	14-17	24-27	26-23	26-30	27-31	24-19
21-17	22-18	2-6	2-7	31-27	18-15	28-32
13-22	17-22	27-31	31-27	22-18	31-26	22-18
27-24	18-14	6-9	7-11	27-31	23-19	draw(G)
18-27	22-26(D)	31-27?(E)	27-24	20-16	26-31	
25-11	24-20	16-12				

Richard Beckwith – Ed Bruch, 2006 Nat. Ty., Masters, round 8 game 3

A – Skull Cracker

B – 3-8 to a long draw, Chinook – M. Tinsley, 1990 practice match g.13.

C – White still has a strong game, but some players have agreed to draws before this.

D – 13-17 may be easier.

E – 23-19 16-12 19-16 11-7 31-27 9-14 27-23 7-2 23-19 draw. I think Red can keep the White piece from kinging. The remainder of the game may seem tedious, but I think it is well-worth playing out.

F – Theoretically, this doesn't jeopardize the win. But from a practical point of view, with a limited time for completion of the round, it does jeopardize the win. 30-26 27-31 26-23 31-27 23-18(F1) 27-31 18-15 32-27 28-32 27-24 (27-23 15-19 WW) WW.

F1 – R. Beckwith: Alex, after the game, had a different note F solution with "lining up on 18 & 23 and letting the man on 21 go free." I suspect he was talking about 22-18 (instead of your 23-18 in your note F) 21-25 (27-31 20-24 21-25 24-27) 28-24 27-31 24-27 into a winning ending.

G – The game is still a WW. At a fairly fast speed, but with an eight piece database, KingsRow

failed to win this after an hour and a couple hundred more moves. I have not been happy with KingsRow's lack of aggressiveness in some endings. Here I think White has to get a king back into this double corner. The other two games of this match, two draws, were shown under 9-13 21-17 5-9.

Var. 1**JL**

28-24 8-11 26-23 1-5(A) 24-20 11-15 21-17 13-22 27-24 18-27 25-11 7-16 32-23(B) 3-7 20-11 7-16 29-25 2-6 25-22 6-9 14-10 9-14(C) 10-7 5-9 7-2 16-20?(D) 2-6 20-27 6-13 14-17 31-24 17-26 24-20 26-31 13-17 31-27 23-18* 27-23 17-14* 23-19 14-10* 19-23 18-14 23-19 14-9 4-8 20-16(E) WW,
Richard Hallett – Richard Beckwith, 2008 Nat. Ty., Masters, round 6 game 1

A – Back into the trunk.

B – To the same as the trunk.

C – Varies from the trunk game.

D – 9-13 draw PP.

E – This same idea gives a piece down draw at the end of this game:

12-16 24-20 8-12 28-24 9-14 22-18 3-8 18-9 5-14 23-19 16-23 27-9 6-13 26-23 10-15 31-27 1-6 23-19 15-18 25-22 18-25 29-22 6-9 27-23 7-10 32-28 10-14 30-26 2-7 22-18 13-17 19-16 12-19 23-16 14-30 21-5 8-12 5-1 12-19 24-8 4-11 1-6 30-26 6-2 26-23 28-24 11-16 2-11 23-18 24-19 16-23 20-16 draw, J. Scott – A. Jordan, 1915 Nat.

Also see B. Boland's *Familiar Themes*, p.15.

Var. 2**JL**

17-13 5-9 26-22(v.4) 7-10(A) 22-15 10-19 25-22 9-14!?(B) 22-17(C) 8-11?(D) 17-10 6-15 21-17 4-8 27-24 11-16 24-20?(E) 8-11 17-14 15-18 29-25 3-7 31-27 1-5 25-22 18-25 30-21 11-15* 20-11 7-16 14-10 15-18 10-6 2-9 13-6 19-23 6-2 23-26* 2-7 18-22 7-11 16-20 11-15 26-30 15-18 30-25 18-14 25-30 21-17 22-25 17-13 30-26 13-9 25-30 9-6 30-25 6-2 25-21 2-6 26-22 6-10 22-26 10-15 21-25 14-10 26-22 27-23 22-26 32-27 26-19 15-24 12-16* 10-7 25-22 7-11 22-26 11-8(F) 26-23* draw, **Richard Beckwith – Richard Hallett, 2008 Nat. Ty., Masters, round 6 game 2**

A – Beckwith: I played 7-10 because I recalled there was lots of *ACFB* play on this move. What I had forgotten was that there was a later, preferred Lafferty defense with 9-14 instead of 7-10, which Hallett knew about.

B – Questioned in the 1992 I-D booklet, R. Beckwith. 3-7 draw PP. 2-7 is KingsRow's recommendation.

C – 27-24 (29-25 draw?) 3-7 24-15 7-10? (6-9* seems to draw) 22-17 WW, W. Schumann – M. Banks, 1992 I-D.

D – 14-18*! 29-25 12-16 30-26 (safer moves probably draw) 18-23 27-18 8-12 26-22 19-24 Red strong?

E – 32-27 (or several other moves) 16-20 29-25 (or several other moves) 3-7 17-14 WW.

F – Scoresheet: "11-15 16-19? 27-23!" The other game of this match, a win for Beckwith, will be shown under 11-15 24-20 8-11.

Var. 3**JL**

28-24(A) 8-11 17-13(B) 5-9 21-17 4-8(C) 17-14 1-5 24-19 11-16 25-21(D) 16-23 26-19 18-22*
 30-25*(E) 9-18 27-23* 18-27 25-18 8-11 32-23* 11-16 29-25 16-20 31-27* 7-10?(F) 25-22?(G)
 10-14* 18-9 5-14 22-18* 6-9 13-6 2-9 18-15* 9-13 15-10 13-17 10-6 17-22 6-1 22-26 1-6 14-17
 21-14 26-31 19-15 31-24 15-11 24-19 23-16 12-19 14-9 19-24 9-5 24-27 5-1 20-24 6-10 27-31
 10-15 24-27 1-6 27-32 6-10 32-27 15-19 31-26 11-7 3-8 7-3 8-12 3-8 27-23 19-24 23-18 8-11 26-22
 24-27 22-17 draw, **Phil Schwartzberg – Paul Lyons, 2008 Nat. Ty., Majors, round 3 game 1**

A – Rare.

B – 17-14 should draw, V. Adams – C. Doane, 1968 Nat.

C – 11-15 draw, KingsRow.

D – 19-15 draw.

E – 30-26? 9-18 26-17 18-22 RW.

F – 7-11 or some other moves draw.

G – 21-17! 3-8 25-21 8-11 18-15 11-18 23-7 2-11 17-14 WW.

Var. 4 off var. 2**JL**

21-17 8-11 26-23(A) 9-14 17-10 7-14 28-24 4-8 25-21 11-15(B) 29-25 8-11(C) 24-20(D) 1-5?(E)
 30-26 3-7 26-22 12-16 22-17 7-10 31-26 5-9 26-22 16-19 23-7 2-11 27-23 WW, **Paul Lyons – Phil
 Schwartzberg, 2008 Nat. Ty., Majors, round 3 game 2**

A – 25-21 draw PP.

B – 3-7 draw, E. Bruch – T. Landry, 1983 IM.

C – Or 3-7 draw PP.

D – 30-26 draw, M. Tinsley – S. Bingham, 1948 Nat.

E – 3-7 draw, R. Cast – G. Bailey, 1966 Nat. from 10-14 24-20 14-18.

10-15 22-18 15-22 (#72)**Game 75****Jim Loy, annotator**

10-15	8-24	5-14	7-11*	15-24	13-22	14-17
22-18	28-19	25-22	13-6	28-19	26-17	9-6
15-22	4-8	11-15	2-9	3-7	18-23	10-14
25-18	23-18(C)	27-24(D)	32-28	20-16	17-13	6-2
6-10(A,v.1,2)	8-11	1-5	11-16	9-13	10-14	17-22
24-19(B)	29-25	22-17	24-20	30-26*	13-9	draw
11-15	9-14	5-9	16-23	14-18*	7-10	
18-11	18-9	17-13	26-19	21-17*	16-11	

John Webster – Jim Morrison, 2006 Nat. Ty., Masters, round 8 game 1

A – = 9-13 22-17 13-22 25-18 6-9.

B – 29-25 draw PP.

C – 29-25 draw PP.

D – 32-28 draw, KingsRow.

Var. 1**JL**

11-15 18-11 8-15 29-25(A) 4-8 25-22 8-11 23-18 6-10 27-23 9-14(B) 18-9 5-14 24-19 15-24
28-19(C) 11-15 32-28(D) 15-24 28-19 7-11 22-18 1-5 18-9 5-14 26-22 11-15 30-26(E) 15-24 22-18
12-16(F) 18-9 16-20 26-22(G) 24-27 31-24 20-27 23-18 draw(H), **Jim Morrison – John Webster,
2006 Nat. Ty., Masters, round 8 game 2**

A – 21-17 draw PP.

B – 1-6 draw PP.

C – = 9-13 23-19 11-16 27-23 10-14 22-17 13-22 25-9 5-14 24-20 6-10 20-11 8-24 28-19 4-8 29-25
8-11 25-22 = 9-14 24-20 11-16 20-11 8-15 22-18 15-22 25-9 5-14 29-25 4-8 25-22 8-11 27-24 10-15
24-19 15-24 28-19 6-10 C.R.

D – KingsRow moves 19-16.

E – Or 30-25 draw PP.

F – 14-17 draw C.R., J. Lewis – J. Reed, 1887 match g.1.

G – 23-18 draw C.R., R. King – J. Morrison, 1986 Nat. from 9-14 24-20 11-16.

H – E. Bruch – H. Kelley, 1986 Nat. from 9-14 22-18 10-15. The other two games of this match were not played.

Var. 2**JL**

9-13 29-25 11-15 18-11 8-15 25-22 4-8 23-18 8-11 27-23(A) 5-9 32-27(B) 6-10(v.3) 24-19 15-24
28-19 2-6 27-24 10-15* 19-10 6-15 23-19(C) 1-5 19-10 7-23 26-19 3-7 30-26 7-10 draw(D), **Jim
Morrison – Ron King, 2008 Nat. Ty., Masters, round 7 game 3**

A – = 9-13 24-20 11-15 22-17 13-22 25-11 8-15 29-25 4-8 25-22 8-11 23-18 6-9 C.R.

B – 21-17 draw PP.

C – Varies from var. 3. See that variation for more comments.

D – R. Hallett – D. Oldbury, 1985 match g.6.

Var. 3**JL**

7-10 24-19 15-24 28-19(A) 2-7(B) 27-24(C) 10-15* 19-10 6-15(D) 21-17(E) 12-16 24-20?(F) 7-10
RW, **Ron King – Jim Morrison, 2008 Nat. Ty., Masters, round 7 game 4**

A – 27-20 inferior, Kear's *Encyclopedia* p.216N.

B – = var. 2. 11-16 Red strong, KE p.216N.

C – 30-25 draw, J. Ferrie – S. Grover, 1905 IM.

D – 7-14 draw, J. Ferrie – H. Lieberman, 1927 IM.

E – Varies from var. 2.

F – 30-25* 1-5 25-21* 3-8 17-14 8-12 24-20 16-19 23-16 12-19 21-17 19-24 26-23 24-28 31-27
draw. The other two games of this match, a win for King and a draw, were shown under 9-13 22-18
10-14 in *ACFB* #335.

10-15 23-18 6-10 (#73)			Game 76		Jim Loy, annotator	
10-15	28-19(A)	7-16	22-17	24-20	6-2	6-10
23-18	11-15(v.1)	22-18(E)	2-7	16-19	27-31	3-8
6-10	27-24(B)	10-14(v.2)	17-10	17-14	2-6	32-28
18-14	8-11(C)	18-9	7-14	19-24	23-26(G)	8-11
9-18	25-22	5-14	26-22	14-10	30-23	28-19
24-19	11-16	29-25	11-15	18-23	31-26	11-15
15-24	31-27(D)	4-8	22-17	10-6	23-19	draw
22-6	16-23	25-22(F)	14-18	24-27	15-24	
1-10	27-11	8-11				

Clayton Nash – Jim Morrison, 2006 Nat. Ty., Masters, round 1 game 3

A – J. Childers played 27-20 nine times in the 1991 I-D Ty., winning eight of them.

B – 21-17 is probably weaker, H. Reynolds – W. Ryan, 1934 Nat.

C – 15-18 draw, is also popular.

D – Rare. 26-23 draw PP.

E – 21-17 draw, D. Lafferty – E. Lowder, 1988 Nat.

F – 32-27 and 27-23 may win the piece on 14, but Red can regain it by kinging.

G – Easiest.

Var. 1

JL

11-16 26-23(A) 8-11 25-22 11-15 22-17(B) 15-24 27-11 7-16 23-18 4-8 17-14(C) 10-17 21-14 3-7*
 29-25 8-11 25-21 2-6 32-27 16-20 27-24(D) 20-27 31-24 11-16(E) 18-15 16-19(F) 15-11 19-28 11-2
 6-9 14-10 9-13 2-7 12-16* 7-11 16-20 30-26 28-32 26-23 32-27 23-19 27-23 11-16 23-26 19-15
 26-23 10-7 5-9 7-3 20-24 15-11 24-27 draw, **Jim Morrison – Clayton Nash, 2006 Nat. Ty.,
 Masters, round 1 game 4**

A – 25-22 draw, J. Ricca – W. Sides, 1954 Nat.

B – 27-24 should draw, A. Moiseyev – R. Beckwith, 2004 Ohio Ty. or 30-26 draw, Cake – Nemesis, 2002 World Computer Ty.

C – 29-25 draw, C. Olliff – W. Adams, 1958 Nat.

D – 31-26 6-10 26-23 10-17 21-14 12-16 30-26 5-9 draw.

E – 12-16? loses.

F – Or 16-20 draw.

The other two games of this match, a draw and a win for Nash, will be shown under 12-16 21-17 9-13.

Var. 2

JL

4-8(A) 18-14 10-17 21-14 2-6(v.3) 26-23 16-20 24-19 8-11 29-25 6-10 14-7 3-10 23-18 10-14 18-9
 5-14 25-22 20-24 30-25 draw, **Jim Morrison – Mike Fulkerson, 2006 Nat. Ty., Masters, round
 5 game 1**

A – 5-9 draw, E. Morrison – L. Adams, 1996 Canadian Match Championship.

Var. 3 off var. 2**JL**

3-7 26-22(A) 16-19(B) 24-15 7-10 15-6 2-25 29-22 8-11 22-17 12-16 17-14 16-19 14-10 19-23 10-7 11-15 7-3 15-18 3-7 18-22 7-10 22-26 draw, **Mike Fulkerson – Jim Morrison, 2006 Nat. Ty., Masters, round 5 game 2**

A – 29-25 draw, G. Lindsay – R. Leshchinsky, 1990 Nat.

B – Easiest.

The other two games of this match, two wins for Morrison, will be shown under 11-16 22-17 9-13.

10-15 23-18 7-10 (#74)**Game 77****Jim Loy, annotator**

10-15 23-18 7-10 27-23 3-7(A) 24-20 15-19(v.1) 23-16 12-19 18-15 11-18 22-15 7-11 32-27 11-18 26-23 19-26 30-7 2-11 21-17 6-10 25-21 8-12 27-23 11-15 29-25(B) 4-8 25-22 15-19(C) 23-16 12-19 17-13 10-15 13-6 1-10 20-16 8-12 16-11 19-24 28-19 draw

Jack Francis – Rich Beckwith, 2008 Nat. Ty., Masters, round 3 game 3

A – = 11-15 23-18 8-11 27-23 3-8.

B – 23-19 draw, L. Taylor – J. Mourning, 1960 Nat. and several games since.

C – 8-11 should draw in L. Stubblefield – M. Banks, 1987 I-D, as shown in the notes to A. Moiseyev – K. Albrecht, 1998 Nat.

Var. 1**JL**

9-13 32-27(A) 5-9 27-24(B) 15-19 24-15 10-19 23-16 12-19 18-15 11-18 22-15 9-14 25-22 14-18 31-27 18-25 29-22 1-5 15-11?(C) 8-15 27-23 4-8 23-16 7-11 16-7 2-11 26-23 6-10?(D) 28-24*(E) 10-14 23-19 15-18 22-15 11-18 19-16 8-12 16-11 13-17 11-7 17-22 7-2 22-26 30-23 18-27 2-6 27-32 24-19 32-27 19-15 27-23 15-10 23-19 10-7 19-15 7-2 14-18 21-17 18-23 17-14 12-16 draw, **Rich Beckwith – Jack Francis, 2008 Nat. Ty., Masters, round 3 game 4**

A – 28-24 15-19 draw PP.

B – “Seems weak,” H. Lieberman in the 1927 IM book. Beckwith says that 18-14 can also be problematic, as in this game:

11-15 23-18 8-11 27-23 3-8 24-20 9-13 32-27 5-9 18-14 (varies from the above game) 9-18 23-14 10-17 21-14 15-19 27-24 19-23 26-19 11-16 20-11 7-23 24-20 (“White may be better off playing the trickier 24-19, followed by 8-11 28-24 23-27 14-10 trying to strand the piece on 11,” R. Beckwith) 1-5! (6-10 draw, R. Beckwith – A. Moiseyev, 2005 GAYP Nat., two rounds earlier) 25-21 (22-18? 13-17 Red strong, H. Freyer – H. Maine, 1957 Ryan Memorial Mail Ty.) 2-7 22-18 {30-25 6-9 21-17? (28-24* 9-18 22-15 7-11 15-10 23-27 10-7 27-32 7-2 draw) RW, H. Burton – E. King, 1979 Southern Open} 6-9 29-25? (28-24! 7-11 14-10* draw) 7-11 25-22 11-16 20-11 8-15 18-11 9-25 11-7 12-16 7-3 16-20 3-7 25-29 7-11 23-27 31-24 20-27 11-15 27-31 28-24 31-27 24-20 27-23 20-16 29-25 21-17 13-22 30-21 5-9 15-19 23-18 16-11 9-13 11-7 22-26 7-3 RW, A. Moiseyev – J. Morrison, 2005 GAYP Nat.

(2010 BC – continued from page 10)

t) 26-23!! 17-26 29-25 15-19 25-22 19-24 (21-25 draw) 22-17 24-28 23-18 28-32 30-23 31-26 17-14 draw

E) missing

F) 28-24? 16-19 23-16 15-18 R. powerful, W. Hellman (probable draw)

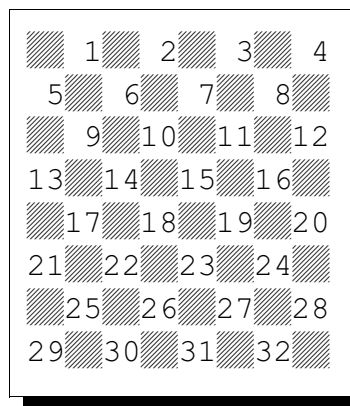
G) 9-14 25-22 7-11 28-24 1-5? (4-8* = note H, or 11-16? 23-19* 16-23 27-11 20-27 32-23 WW, R. Flood) 23-18* 14-23 27-18 20-27 31-24 and 26-23 WW, R. Flood H) 9-14 23-18 14-23 27-18 20-27 32-23 2-7*(u) 31-27 15-19 23-16 11-20 18-14 10-15* 14-9 6-10 27-23 8-11 (20-24 9-6 draw, R. Flood) 9-6 10-14 17-10 7-14 6-2 14-17 13-9 (2-7 3-10 12-8 11-16 8-3 15-19 3-7 19-24 draw, R. Flood) 1-5 22-13 5-14 2-6 15-18 23-19 14-17 6-10 18-22 26-23 11-15 19-16 15-19 23-18 22-26 draw, R. Flood

u) 1-5? 31-27 (18-14 WW) 2-7 27-24 15-19 24-15 10-19 23-16 11-20 18-14 6-10 13-9 W. best, R. Flood

#128 Var. 1: **12-16 21-17 16-19** 24-15 10-19 23-16 11-20 22-18 8-11(B,v.2) 26-23 9-13 17-14 13-17(E) 28-24 6-10 24-19 17-21 31-26 10-17 25-22 2-6 22-13 11-16 19-12 3-8 12-3 5-9 3-10 6-31 13-6 1-10 32-28 draw, L. Levitt

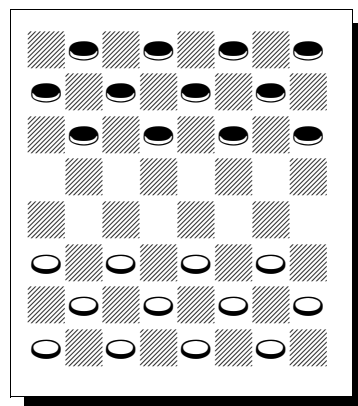
B) 7-10 25-21 3-7 17-13 9-14 18-9 5-14 29-25 8-11 25-22 11-15 22-17 4-8 26-23 15-18 28-24 7-11 13-9 6-22 21-17 WW, M. Tinsley, may draw

E) 6-9 31-26 13-17 (17-21 is a typo) 25-22 11-15 draw, W. strong



Numbered Board

Reading Checkers Moves: Feel free to make a copy of this, and keep it handy for reading checkers moves. The two players are called Red and White, and in the past they were called Black and White. Notice that Red's pieces begin the game on 1 through 12, and White's begin on 21 through 32. The game is played on the dark squares, but books and magazines (including the *ACFB*) normally reverse the colors of the squares of diagrams to improve readability. In



Starting Position

In the *ACFB*, Red is at the top of the diagram. Moves are recorded as from-to, an example being 11-15. A multiple jump is normally written like 10-26 unless that is ambiguous, then 10-19-26 is written.

ICHF 2009 Annual Magazine – 168 pages, spiral bound, covering checker events of 2008. Buyers may send a \$20 check (\$25 overseas), made out to Deloris Walker, to International Checker Hall of Fame, Post Office Box 365, Petal, MS 39465

American Checker Federation
Alan Millhone, President
P.O. Box 1
Belpre, OH 45714-0001

Computer Checkers – Ryan’s *Modern Encyclopedia of Checkers*, 2nd ed.
by Jim Loy

The following corrections were performed by Chinook and its ten piece database. Positions with more than ten pieces were analyzed by me with KingsRow’s help, and the results were verified by Chinook, once the positions had ten pieces.

P.80, var. 1 is a draw, Chinook.

P.100, note H, at end, draw Chinook.

P.109, note N, parentheses, continue 19-23 27-24 29-25 24-19 5-9 2-6 18-22 6-13 22-26 31-22
25-18 28-24 23-27 19-15 27-31 draw, verified by Chinook.

P.110, note B, 5th line, 1st move (21-17), continue 3-7 25-21 6-10 17-13 10-17 21-14 1-6 29-25
6-10 25-21 10-17 21-14 7-11 13-9 19-23 draw, verified by Chinook.

P.150, note B, after last move (23-19), continue 30-26* 15-10 26-23* 19-16 14-17 15-11 23-19* 4-8
17-22 11-7 19-16* 8-11 16-20* 7-2 22-25* 11-15 20-16* 15-18 16-11* 28-24 25-30* draw,
Chinook (Nemesis finally sees the draw).

P.152, note C, end of line 2, WW verified by Chinook after 15-24.

P.196, note E at end, WW verified by Chinook.

P.207, v.7, draw verified by Chinook.

P.222, note D, 2nd line, parentheses, WW verified by Chinook.

P.224, note J, draw verified by Chinook.

P.224, note L, 4th line, last move (30-25*), continue 17-14 25-22* 21-17 22-25* 3-8 25-22* draw
Chinook.

Beginners’ Page – Real Checkers by Jim Loy

I have given this advice before, and I will do it again and again, because this is the most important advice that I can give: **Slow down and think!** If you really want to play bad checkers, then play fast. If you want to play real checkers, then slow down and think. You can beat some players by playing fast. But that is a trick, and it’s not real checkers. In almost every game you play, there are moves that require several minutes of thought. It is time to start playing real checkers.